



Model: EL-350W

Description: Single Door Magnetic Lock
(Waterproof)

Description:

EL-350W single door electric lock with waterproof function, the case is stainless steel and it is 100% waterproof treatment. All the accessories are sealed inside the lock cylinder, especially for metal door, heavy door and so on.

Parameters:

- ▶ Lock Size: 227.6Lx52.6Wx28.5H(mm)
- ▶ Armature plate: 190Lx45Wx11H(mm)
- ▶ Holding Force: 350kg (800Lbs)
- ▶ Voltage: 12/24VDC+10%
- ▶ Current Draw: DC12V/480mA DC24V/240mA
- ▶ Optional Bracket: EL-350L EL-350ZL EL-350UL
- ▶ Signal Output: Dry Contact, Max Rating of Contact Current 3A
- ▶ Suitable for: Wooden door , Glass door ,Metal door , Fireproof door
- ▶ Surface Temp: $\leq +20^{\circ}\text{C}$
- ▶ Operating Temp: $10\sim +55^{\circ}\text{C}$ (14-131F)
- ▶ Suitable Humidity: 0~95%(non-condensing)
- ▶ Finishes for Shell: Anodized aluminum
- ▶ Finishes for Magnetic: Zinc; Finishes for Armature: Zinc
- ▶ Weight: 2.7kg

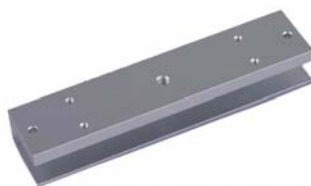


Features:

- ▶ Collinear Load Test 350kg, 800pounds
- ▶ Dual Voltage 12 or 24 VDC(optional)
- ▶ The Standard Voltage is 12VDC when Finished
- ▶ MOV Provides Reverse Current Protection
- ▶ Suitable For Wooden Door, Glass Door, Metal Door, Fireproof Door
- ▶ 100 percent waterproof, All the Parts Pressurize in resin.
- ▶ Special Waterproof, Indoor and Outdoor can be installed.
- ▶ Design with no Mechanical Failure
- ▶ Increase the holding Force, Dual Insulative Housing
- ▶ CE Certificate by European Union



EL-350L



EL-350UL



EL-350ZL