



Model: AB-800B

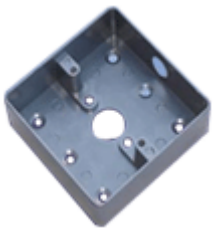
Aluminium Alloy Exit Button (Square)

### Parameters:

- ▶Lock Size: 86Lx86Wx20H(mm)
- ▶Standard Structure: Aluminum Panel, Steel Button
- ▶Contact Rating: 12-28V,3A
- ▶Output Contact: NO/NC/COM
- ▶Mechanical Life: 500000 tested
- ▶Optional Mounting Back Box: AB-800B-M
- ▶Suitable for Door: Hollow Door
- ▶Operating Temp: -20~+55°C(14-131F)
- ▶Suitable Humidity: 0~95%(non-condensing)
- ▶Weight: 0.25kg

### Features:

- ▶Aluminum Panel with Elegant Style
- ▶Tested to 500000 Cycles
- ▶Three Contact Outputs,Suitable for all kinds of Locks



Mounting Back Box: AB-800B-M