



Model: AEL-280W

Description: Single Door Magnetic Lock (280kg/6000Lbs)

Parameters:

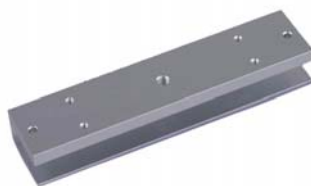
- ▶Lock Size: 180Lx38Wx13H(mm)Holding Force: 280kg(600Lbs)
- ▶Voltage: 12/24VDC+10%
- ▶Current Draw: 12V/280mA 24V/140mA
- ▶Optional Bracket: AEL-280L AEL-280ZL AEL-280UL
- ▶Suitable for: Wooden door , Glass door ,Metal door , Fireproof door
- ▶Signal Output: Need to order AEL-280W-S
- ▶Surface Temp: $\leq +20^{\circ}\text{C}$
- ▶Operating Temp: $10\sim +55^{\circ}\text{C}(14-131\text{F})$
- ▶Suitable Humidity: 0~90%(non-condensing)
- ▶Finishes for Shell: Anodized aluminum
- ▶Finishes for Magnetic: Zinc
- ▶Finishes for Armature: Zinc
- ▶Weight: 1.9kg
- ▶Standard Packing: 12pcs

Features:

- ▶Collinear Load Test 280kg, 600pounds
- ▶Dual Voltage 12 or 24 VDC(optional)
- ▶The Standard Voltage is 12VDC when Finished
- ▶MOV Provides Reverse Current Protection
- ▶Anti-Residual Magnetism Designed
- ▶High Strength Material, Anodized Aluminum Housing
- ▶Design without Mechanical Failure
- ▶Increase the holding Force, Dual Insulative Housing
- ▶CE Certificate by European Union



AEL-280L



AEL-280UL



AEL-280ZL