



Model: EL-280D (LED)

Description: Double Door Magnetic Lock with LED (600Lbs x2)

Parameters:

Lock Size: 500L×48.5W×25H(mm)

Armature plate: 180L×38W×11H(mm)

Holding Force: 280kg x2 (600lbs x2)

Voltage: 12/24VDC+10%

Current Draw: DC12V/500mA *2 DC24V/250mA *2

Optional Bracket: EL-280L EL-280ZL EL-280UL

Signal Output: Dry Contact, Max Rating of Contact Current 3A

LED red indicates the door is unlock, Green indicates the door is lock

Suitable for: Wooden door , Glass door ,Metal door , Fireproof door

Surface Temp: ≤+20℃

Operating Temp: 10~+55℃(14-131F)

Suitable Humidity: 0~90%(non-condensing)

Finishes for Shell: Anodized aluminum

Finishes for Magnetic: Zinc

Finishes for Armature: Zinc

Weight: 4.2kg

Features:

Collinear Load Test 280kg x2, 600pounds x2

Dual Voltage 12 or 24 VDC(optional)

The Standard Voltage is 12VDC when Finished

MOV Provides Reverse Current Protection

LED Indicates the Door Status

Lock Status sensor(NO/NC/COM)

Anti-Residual Magnetism Designed

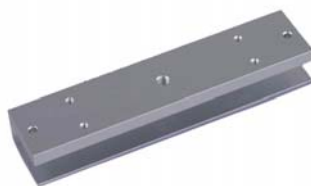
High Strength Material, Anodized Aluminum Housing

Design with no Mechanical Failure

Increase the holding Force, Dual Insulative Housing



EL-280L



EL-280UL



EL-280ZL