



Model: EL-350 (LED)

Description: Single Door Magnetic Lock with LED (800Lbs)

Parameters:

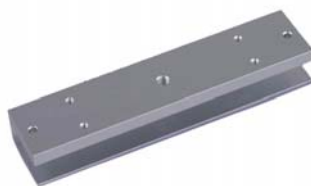
- ▶Lock Size: 285Lx54.7Wx27.7H(mm)
- ▶Armature plate: 190Lx45Wx11H(mm)
- ▶Holding Force: 350kg (800Lbs)
- ▶Voltage: 12/24VDC+10%
- ▶Current Draw: DC12V/480mA DC24V/240mA
- ▶Optional Bracket: EL-350L EL-350ZL EL-350UL
- ▶Signal Output: Dry Contact, Max Rating of Contact Current 3A
- ▶LED red indicates the door is unlock, Green indicates the door is lock
- ▶Suitable for: Wooden door , Glass door ,Metal door , Fireproof door
- ▶Surface Temp: $\leq +20^{\circ}\text{C}$
- ▶Operating Temp: $10\sim +55^{\circ}\text{C}$ (14-131F)
- ▶Suitable Humidity: 0~90%(non-condensing)
- ▶Finishes for Shell: Anodized aluminum
- ▶Finishes for Magnetic: Zinc
- ▶Finishes for Armature: Zinc
- ▶Weight: 2.5kg

Features:

- ▶Collinear Load Test 350kg, 800pounds
- ▶Dual Voltage 12 or 24 VDC(optional)
- ▶The Standard Voltage is 12VDC when Finished
- ▶MOV Provides Reverse Current Protection
- ▶Suitable For Wooden Door, Glass Door, Metal Door, Fireproof Door
- ▶LED Indicates the Door Status
- ▶Lock Status sensor(NO/NC/COM)
- ▶Anti-Residual Magnetism Designed
- ▶High Strength Material, Anodized Aluminum Housing
- ▶Design with no Mechanical Failure
- ▶Increase the holding Force, Dual Insulative Housing
- ▶CE Certificate by European Union



EL-350L



EL-350UL



EL-350ZL