



Model: EL-280 (LED)

Description: Single Door Magnetic Lock with LED (600Lbs)

Parameters:

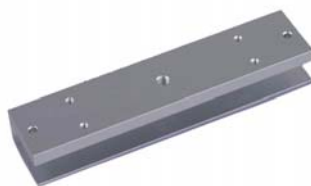
- ▶Lock Size: 250L×47W×25H(mm)
- ▶Armature plate: 180L×38W×11H(mm)
- ▶Holding Force: 280kg (600lbs)
- ▶Voltage: 12/24VDC+10%
- ▶Current Draw: DC12V/500mA DC24V/250mA
- ▶Optional Bracket: EL-280L EL-280ZL EL-280UL
- ▶Signal Output: Dry Contact, Max Rating of Contact Current 3A
- ▶LED red indicates the door is unlock, Green indicates the door is lock
- ▶Suitable for: Wooden door , Glass door ,Metal door , Fireproof door
- ▶Surface Temp: ≤+20℃
- ▶Operating Temp: 10~+55℃(14-131F)
- ▶Suitable Humidity: 0~90%(non-condensing)
- ▶Finishes for Shell: Anodized aluminum
- ▶Finishes for Magnetic: Zinc
- ▶Finishes for Armature: Zinc
- ▶Weight: 2kg

Features:

- ▶Collinear Load Test 280kg, 600pounds
- ▶Dual Voltage 12 or 24 VDC(optional)
- ▶The Standard Voltage is 12VDC when Finished
- ▶MOV Provides Reverse Current Protection
- ▶Suitable For Wooden Door, Glass Door, Metal Door, Fireproof Door
- ▶LED Indicates the Door Status
- ▶Lock Status sensor(NO/NC/COM)
- ▶Anti-Residual Magnetism Designed
- ▶High Strength Material, Anodized Aluminum Housing
- ▶Design with no Mechanical Failure
- ▶Increase the holding Force, Dual Insulative Housing
- ▶CE Certificate by European Union



EL-280L



EL-280UL



EL-280ZL